

M•LOCKS

PL3015

**Mounting
instructions
V01 EN**



M•LOCKS BV

Vlijtstraat 40 • 7005 BN Doetinchem • the Netherlands • www.m-locks.com

PL3015



PL3015

1 IMPORTANT INSTRUCTIONS

- **Before mounting the entry unit, please read the instructions carefully.**
- **Exclusively use supplied screws for mounting the entry unit.**
- At the time of delivery, the lock is set to the standard Manager Code of 1 2 3 4 5 6. Change this code immediately to your own choice of Manager Code. Do not use personal or other simple data which can easily be found out for your Manager Code.
- Please keep the code always carefully and protect it against improper use by unauthorized persons.
- The Entry unit PL3015 is only suitable for non-rotatable fixed mounting.

2 CHARACTERISTICS

PL3015 Metal housing chrome, with integrated battery compartment, with LED

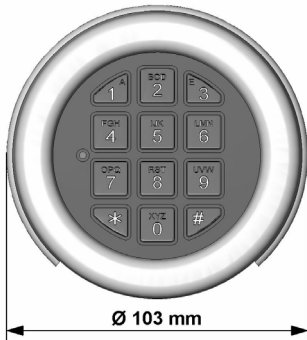
The integrated battery compartment in the bottom of the entry unit opens by moving a slider. Cable length is approximately 30 cm.

The input unit has two LEDs to illuminate the keyboard. To turn on the LED, please press the



button. The LEDs turn off automatically after about 20 seconds.

3 DIMENSIONS

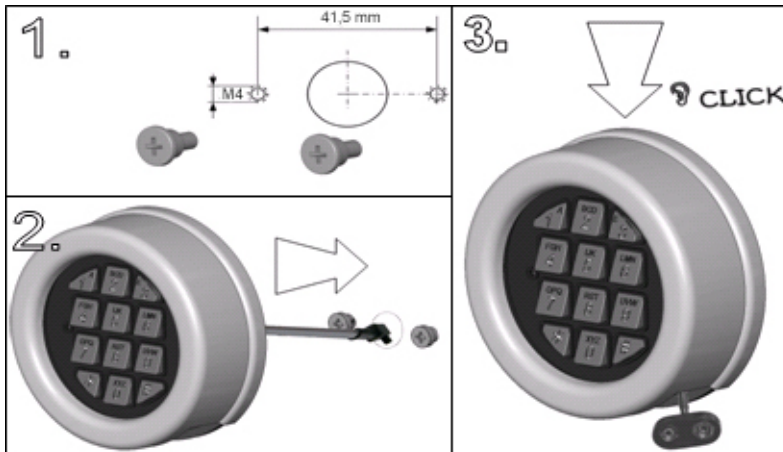


The diameter of the cable hole should be minimum 9 mm, maximum 12 mm. The hole must be de-burred well to avoid damage to the cable.



Similar to picture.

4 MOUNTING INSTRUCTIONS



1. Affix the two mounting adapter screws (M4) hand tied.
2. Route the cable through the cable hole and slide the unit on the mounting adapters. The back of the unit must touch the door surface.
3. Control cable routing, then push the unit down until it snaps on positively.

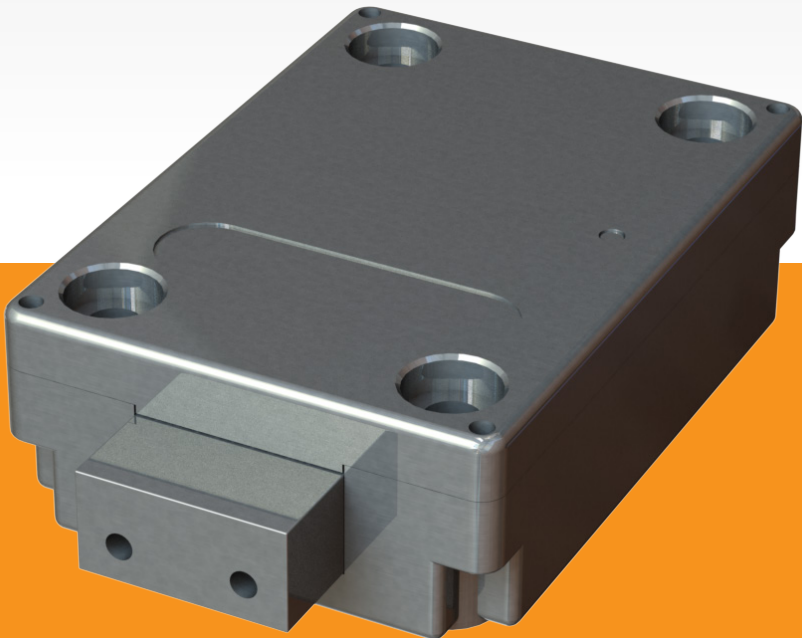
The entry unit can now not be removed!

Connect one battery to the battery clip. Only use new 9V ALKALINE Duracell / Duracell Industrial- or Energizer batteries.



**Tantum
Basic**

**User manual
V02 EN**



Made in The Netherlands

M•LOCKS

CONTENT INSTRUCTIONS FOR USE

- 1 Important instructions
- 2 Symbols and signals
- 3 Opening the lock
- 4 Opening the lock with time delay
- 5 Changing code (with the door open!)
- 8 Change closing mode
- 9 Setting the time delay and opening window time
- 10 Deleting the delay setting
- 11 Activating silent alarm
- 12 Set volume
- 13 Replacing the battery
- 14 Troubleshooting

1 IMPORTANT INSTRUCTIONS

- Before using the lock, please read the instructions for use carefully.
- The instructions for use only relate to the lock itself and not to how to operate the safe.
- Ensure that you **only** program the lock while the **safe door is open**.
- After changing the code, always try the code several times with the safe door open.
- **Only after several positive function tests (opening / closing) the safe door may be closed.**
- Each key entry is confirmed by an audible tone and visual signal. These signals are not referred to in the description that follows.
- Acoustic signals are always accompanied by the same optical signals.
- You have a maximum of 10 seconds for each key entry. If you do not make an entry via the keypad during this period of 10 seconds, the entry procedure will automatically abort. You must then start again from the beginning.
- After entering a valid code, a double signal sounds. An invalid entry will trigger a long tone.
- After entering an invalid code the first attempt, wait 20 seconds before entering the code again.
- If the code is entered incorrectly on four consecutive occasions, the keypad and the lock will be disabled for 5 minutes. During this period, the LED will flash every 10 seconds and you will hear a long tone when attempting to make an entry. Entering an incorrect code on two further occasions after the keypad has been re-enabled will trigger a new keypad lock-out period of 5 minutes.
- The lock works with a six digit code.
- **At the time of delivery**, the lock is set to the standard **Manager Code of 1 2 3 4 5 6**. Change this code immediately to your own choice of Manager Code. Do not use personal or other simple data which can easily be found out for your Manager Code
- If needed, the owner of the Manager Code can add one user. This code must be immediately changed by the user in a code of their own choice. Do not use personal or other simple data for your user code.
- Please keep the code always carefully and protect it against improper use by unauthorized persons.
- When typing in your code cover the keypad so no one near you can see your code.
- Depending on the used lock / keypad and the way the lock is installed, there are several ways to open and to close a safe. By example with a lever or by turning the keypad. Please contact your safe supplier for more information about your specific situation.

! Caution! After completing the locking process, please check by operating the boltwork several times that the locking function of the lock is available. The boltwork must not turn.

! Our products fulfil the EN1300 requirements regarding resistance against electrostatic charge. In fact it may happen that the electrostatic charge of a user exceeds the extreme value many times. That's why we are asking you to touch the metal surface of the safe for discharging before operating the lock.

! **Caution! Don't forget your code, if lost, the lock can not be opened anymore!**

! Caution!

- The lock has been designed for use in a temperature range from +10°C to +50°C and a non-condensing humidity range from 30% to 80%.
- It may only be cleaned with a moist cloth (do not use aggressive cleaning agents).
- The lock may only be installed by qualified fitters.
- The lock may not be lubricated.
- Never open the lock housing. If it is necessary to disassemble the hardware, only do so in accordance with the technical instructions. If you fail to do so, the lock may no longer function properly and you will forfeit your right to warranty.

2 SYMBOLS AND SIGNALS

double audible tone, **correct**
entry



LED **flashes**



digit on keypad



long audible tone, **incorrect**
entry



LED **illuminated**



press and hold

3 OPENING THE LOCK

Enter the code (Manager Code set at the factory = 1-2-3-4-5-6). After entering a valid code, a double signal sounds. The lock will open after which the door can be opened.

If the door is not opened within 5 seconds, the lock will automatically lock again in case "Automatic Closing" is active.

A signal will sound every 10 seconds as long as the lock is open in case "Push to Close" is active.

When door/bolt work are closed again, the lock will close, either automatically by closing the door/bolt work (Automatic Closing) or by pushing a random digit on the keypad (Push to Close).

Three long signals will sound when during opening or closing the lock bolt is blocked. Entering the code again will close, respectively open the lock again. Remove the obstruction and re-enter the code.

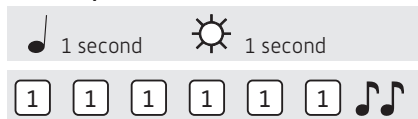
4 OPEN WITH TIME DELAY

For example!



Enter the code (i.e. 1-1-1-1-1-1), after entering a valid code, a double signal sounds and time delay starts. During time delay expires, the light flashes every 2 seconds. After time delay has elapsed, a double signal sounds and the open window starts.

For example!



During the open window, the light flashes and the locks beeps, every second. To open the lock, a valid code has to be entered again during the open window. After entering a valid code, a double signal sounds. The lock will open after which the door can be opened.

If the door is not opened within 5 seconds, the lock will automatically lock again in case "Automatic Closing" is active.

A signal will sound every 10 seconds as long as the lock is open in case "Push to Close" is active.

When door/bolt work are closed again, the lock will close, either automatically by closing the door/bolt work (Automatic Closing) or by pushing a random digit on the keypad (Push to Close).

Three long signals will sound when during opening or closing the lock bolt is blocked. Entering the code again will close, respectively open the lock again. Remove the obstruction and re-enter the code.

If the open window expires without entering a valid code, the lock is secured again with time delay.

Press a random key to abort time delay counting.

5 CHANGING CODE (WITH THE LOCK OPEN!)

Open the lock, see point 3 of this manual.



Press and hold '0' until a double signal sounds. The LED will illuminate when performing the following actions:



- Enter the old code

For example!



- Select your new personal code. Enter the new code



- Enter the new code again

If an incorrect code is entered on the second occasion, a long signal sounds and the old code remains valid.

8 CHANGE CLOSING MODE

The default closing mode is Push To Close. The lock will close by pushing a random digit on the keypad, after door and bolt work have been closed. The motor lock can also close automatically when door/bolt work is closed (Automatic Closing). To achieve "Automatic Closing" a door-/bolt work switch (NC=Normally Closed) has to be connected to the lock.

ACTIVATE AUTOMATIC CLOSING

Only allowed if a door and/or bolt work switch is connected to the lock.



Press and hold „8“ until a double signal sounds. The LED will illuminate during the following actions:



- Enter the Manager Code 



- Enter „4“ to activate "Automatic Closing"

The lock closes automatically after closing door/bolt work.

DEACTIVATE AUTOMATIC CLOSING



Press and hold „8“ until a double signal sounds. The LED will illuminate during the following actions:



- Enter the Manager Code 



- Enter „3“ to deactivate "Automatic Closing"

To close the lock a random digit has to be pushed on the keypad. (except * and #)

9 SETTING THE TIME DELAY AND OPENING WINDOW TIME

Time delay: The time between the first and second code entry in minutes.

Open window time: The period of time in minutes during which the code can be entered a second time and the lock can be opened.

Changing or deleting the time delay values can only be done in open window time.



Press and hold „9“ until a double signal sounds. The LED will illuminate when performing the following actions:



- Enter the Manager Code 🎵🎵



- Enter the delay setting and opening window time. Time delay min. 01 - max. 99 minutes.
Open window time min. 01 - max. 19 minutes.

In this example: 2602 for a **delay of 26 minutes** and an **opening window time of 2 minutes** 🎵🎵.



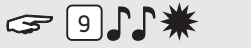
- Enter the delay setting and opening window time again 🎵🎵.

10 DELETING THE DELAY SETTING

The delay setting can only be changed or deleted during the open window time.



Enter a valid code. After the delay period the opening window time starts. The LED flashes 1x a second and beeps.



Press and hold „9“ until a double signal sounds. The LED will illuminate when performing the following actions:




- Enter the Manager Code 



- Delete the delay and opening window time by entering **00 for the delay setting** and **01 for the opening window time**.



- Enter the delay setting and opening window time again .

11 ACTIVATING / DEACTIVATING AND USING SILENT ALARM

Silent alarm only functions in combination with a connection to an alarm system by means of an alarm box. The lock has to be open when activating and deactivating silent alarm.



Press and hold „6“ until a double signal sounds. The LED will illuminate when performing the following actions:

For example!



- Enter the Manager Code 



Activate silent alarm by entering “1”.



Deactivate silent alarm by entering “0”.

USING SILENT ALARM

If silent alarm is activated and the lock is connected to an alarm system.

In case of a hold up situation, a silent alarm can be sent by entering the last digit + 1. If the last number is a 9, you have to enter 0, to send a silent alarm, if the last number is a 0, you have to enter 1 to send a silent alarm.

For example!



For example: Valid code 2-2-2-2-2-2, alarm will be sent by entering: 2-2-2-2-2-3. This code works as a valid code. The silent alarm is indiscernibly for an outsider.

12 SET VOLUME



Press and hold „4“ until a double signal sounds. The LED will illuminate when performing the following actions:

For example!



- Enter your personal Manager Code
- Enter the desired volume, where:

= half volume

= full volume

= silent (only a click when the LED lights up)

13 REPLACING THE BATTERY



If the lock emits a series of audible tones when opened, the battery is almost exhausted and must be replaced immediately.

You may **only use 9V ALKALINE Duracell, Duracell Industrial, Procell or Energizer alkaline batteries.**

Battery compartment in entry unit

Open the battery compartment and replace the battery by a new one.

Battery compartment inside the safe

In case of keypads starting with ST40xx and DE20xx, the battery compartment is located inside the safe. If the battery is completely exhausted, hold a fresh battery pressed against the poles on the front of the keypad, while entering the code, until the lock opens completely.

14 TROUBLESHOOTING

In the event of a fault with an electronic lock, first the battery must always be replaced by a new 9V alkaline battery (Duracell, Duracell Industrial, Procell or Energizer alkaline)!

The lock is not responding.

Replace the battery again with a new 9V alkaline battery (Duracell, Procell or Energizer). If the lock still does not respond when you press a key, please contact your safe dealer.

a. Check the keypad

If the lock does not react, follow the procedure below to check that your keypad is working.



Press and hold key '5' until a double signal sounds. The LED will illuminate when performing the following actions:



Press all the keys one by one. If the key is OK a double signal sounds, if the key is not OK, a long signal sounds. the test will be aborted.

If one or more keys do not operate properly, please contact your supplier.

b. The lock does not emit any audible tones at all

The lock does not emit an audible tone when a key is pressed. The battery is exhausted, replace the battery. See point 13.

c. I have forgotten my code

For security reasons, M-LOCKS does not provide a code that you can use to open your lock. Please contact your supplier.

The lock is difficult to move and open

This is probably a problem with the lock bar mechanism, inside the safe door, and not a problem of the lock itself. This manual only relates to the lock and not the complete safe. Please contact the manufacturer of the safe in order to resolve this problem.



M-LOCKS BV

Vlijtstraat 40

7005 BN Doetinchem

The Netherlands

WWW.M-LOCKS.COM